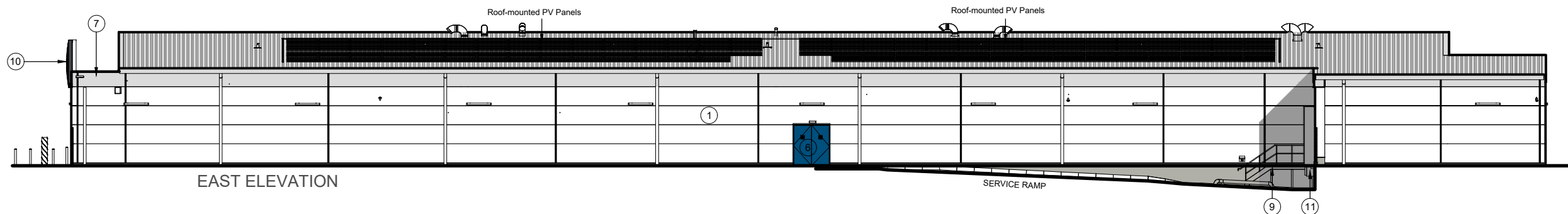
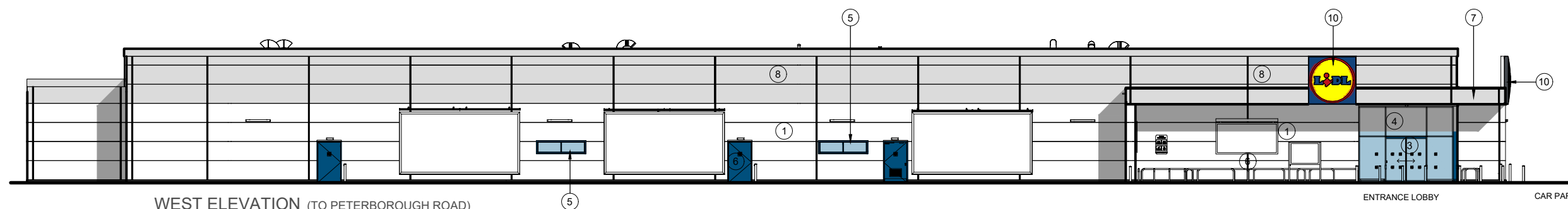




All signage indicative subject to a separate application for advertising consent

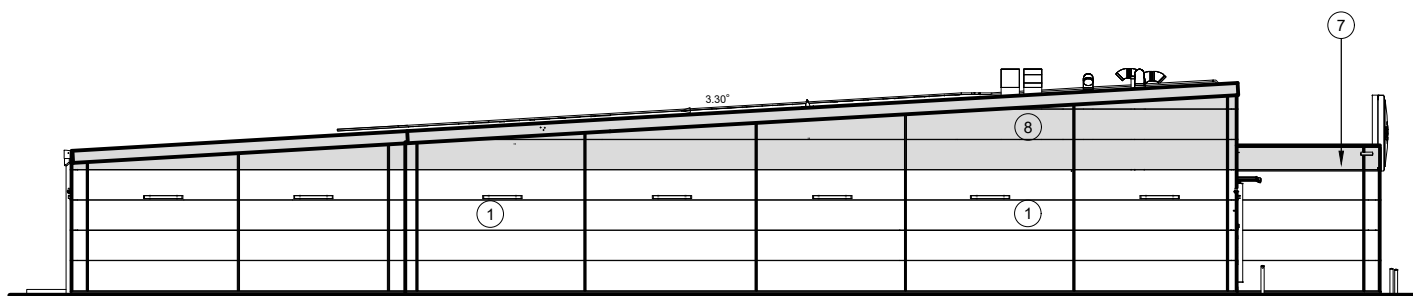


EAST ELEVATION

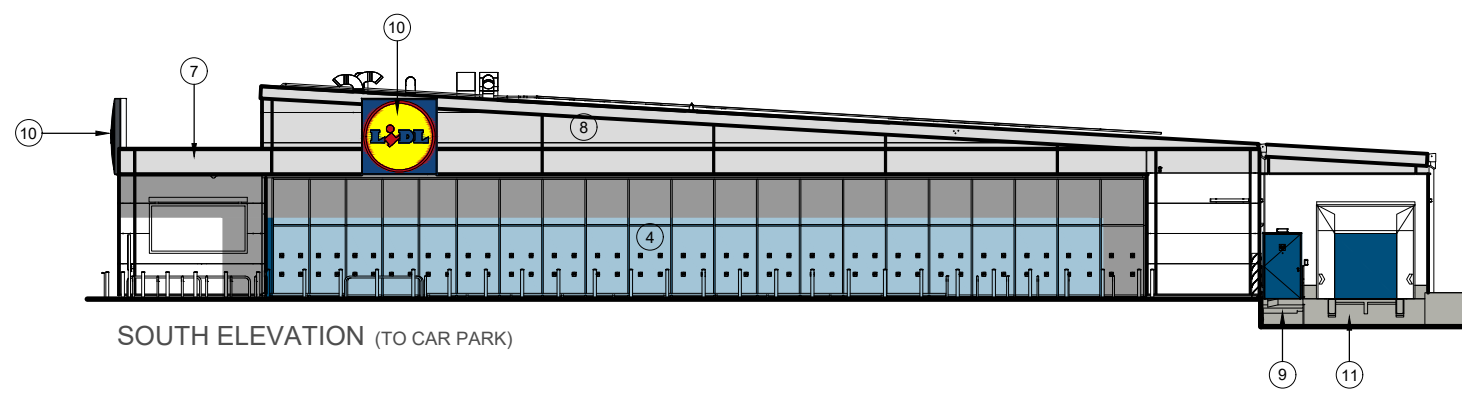


WEST ELEVATION (TO PETERBOROUGH ROAD)

ENTRANCE LOBBY CAR PARK



NORTH ELEVATION



SOUTH ELEVATION (TO CAR PARK)



- ① WALL CLADDING PANELS - METAL INSULATED COMPOSITE PANELS COLOUR WHITE RAL9010
- ② 3° PITCH ROOF- PROFILED COMPOSITE METAL COLOUR ALUMINIUM RAL 9006
- ③ POWDER COATED ALUMINIUM FRAMED GLAZED ENTRANCE LOBBY WITH AUTOMATIC DOORS COLOUR: BLUE RAL5010
- ④ POWDER COATED ALUMINIUM FRAMED GLAZED SHOPFRONT COLOUR: BLUE RAL5010
- ⑤ POWDER COATED ALUMINIUM FRAMED WINDOWS COLOUR: BLUE RAL5010
- ⑥ POWDER COATED STEEL DOOR COLOUR: BLUE RAL5010
- ⑦ EAVES, SOFFITS AND FASCIA PANELS COLOUR ALUMINIUM RAL9006
- ⑧ WALL CLADDING PANELS - METAL INSULATED COMPOSITE PANELS COLOUR ALUMINIUM RAL9006
- ⑨ STEEL STEPS AND BALUSTRADE PAINTED GREY RAL 7024
- ⑩ INTERNALLY ILLUMINATED LIDL SIGNAGE
- ⑪ MINI DOCK LEVELLER

client	
<b>Lidl GB Ltd</b>	
project	
New Lidl Store Peterborough Road Market Deeping	
drawing	
Elevations	
scale	date
1:125@A1, 1:250@A3	July 21
drawn	checked
RM	
drawing no.	revision
7934L-08	